



Centraide
of Greater Montreal

Report to Our Community 2025-2026

MARCH 31, 2026



TAKING ACTION TOGETHER FOR AN INCLUSIVE
GREATER MONTREAL WITHOUT POVERTY.

Photo taken in 2025 at L'Envol, a community agency supported by Centraide of Greater Montreal.

Let's all lend a hand

Table of Contents

6

Message from the Board Chair

7

Message from the President
and Chief Executive Officer

8

Year at a Glance: Key Initiatives,
Partnerships and Collaborations

10

Amounts Raised and Invested

12

Understanding Challenges
and Needs

14

Providing Stable Funding
to Community Agencies

22

Building Skills and Leadership

24

Innovating and Acting Collectively
to Tackle Complex Challenges

28

Mobilizing Community Members

32

Acknowledgements
and Recognition



Centraide
of Greater Montreal

©2026 by Centraide of Greater Montreal
493 Sherbrooke Street West
Montreal, Quebec
H3A 1B6

Photo credits: Unless otherwise
noted, all photographs in this report
were taken by Valérie Paquette.

Greater Montreal is home to 60% of Quebec residents living in poverty—namely 315,000 people below the poverty line plus another 200,000 just above it.

CLOSE-UP ON POVERTY

Understanding poverty

Being in a situation of poverty means not having the resources to meet your essential housing, food, clothing, and transportation needs. It generally means having to live one day at a time and always worrying about the future. It means experiencing constant stress and, in many cases, facing social isolation.

Understanding social exclusion

People who are socially excluded are left off from society or marginalized because of a specific trait (sexual orientation, gender identity, age, disability, ethnic or cultural origin, or a similar characteristic) or due to a specific situation (poverty, job loss, family trauma, mental health problem, complex immigration pathway, or other circumstance that triggers a series of hardships).

Patrick, who is experiencing homelessness, in the hallways of Ricochet, an agency supported by Centraide of Greater Montreal. There, he has access to temporary housing, meals and psychosocial support to help him leave the street behind.



Mission

Taking action together for an inclusive Greater Montreal without poverty.

Vision

For all people to live in dignity in communities where they can reach their full potential.

Values

Solidarity

We are committed to supporting and showing empathy to each other. Solidarity unites us through our belief in our collective responsibility to prioritize human dignity and equal opportunities.

Excellence

We are committed to giving the best of ourselves to maximize our impact and fulfill our mission. Our effort and our curiosity allow us to be proactive and innovative.

Respect

We are committed to cultivating a respectful environment that contributes to equitable and fair relationships in which each person feels listened to and valued for their diversity.

Collaboration

We are committed to collaboration and to fostering collective intelligence by harnessing each person's strengths. Working together and creating synergy lets us transform challenges into opportunities.

Integrity

We are committed to integrity so that we can make sound, fair and courageous choices. Our work ethic lets us build lasting relationships based on trust.

Land acknowledgement

As an organization based in Tiohtià:ke (Montreal), Centraide of Greater Montreal acknowledges that it operates on unceded Indigenous territory.

Message from the Board Chair

An enduring commitment to Greater Montreal

As social inequalities persist and grow more complex in Greater Montreal, Centraide is playing an increasingly vital social role. Centraide is more than just a funder; it is an essential thread in our social fabric, a trusted partner that brings people together, makes sound investments, and supports long-term, community-responsive solutions.

As the second-largest community investor, after government, Centraide is on the front lines of some of society's most pressing challenges, such as housing, food security and homelessness. Through its investment capacity, deep knowledge of communities and steadfast presence in the community ecosystem, Centraide plays a pivotal role in addressing these challenges.

This role demands leadership equal to the challenges. One of the highlights of 2025-2026 for our organization was the appointment of **Tasha Lackman** as President and Chief Executive Officer. With an outstanding career spanning the community, philanthropy and business sectors, Tasha brings a clear vision to Centraide, a deeply human-focused leadership style and a proven ability to engage people in forward-looking projects. Her arrival lets us look to the future with confidence and ambition.

Another highlight was a remarkable annual campaign. In these challenging economic times, the generosity of donors, the dedication of volunteers and exceptional participation in workplaces again demonstrated the strength of solidarity in Greater Montreal. Thanks to this collective generosity, Centraide was able to distribute substantial funding to its network of 375 community agencies and projects, providing the stability and predictability required to address urgent needs.

None of this would be possible without dedicated partners and remarkable teams. First, I would like to acknowledge the vital contribution of community agencies and the ongoing commitment of our philanthropic partners, who bring our mission to life. I also thank the members of the Board of Directors for generously sharing their expertise, as well as former President and Executive Director **Claude Pinard** for his major contribution. Finally, I want to acknowledge the expertise and dedication of Centraide employees, who support this work every day.

Thank you to everyone who takes part in this collective effort and upholds our vision.



Grégoire Baillargeon
Board Chair

A handwritten signature in blue ink, appearing to read 'G. Baillargeon', written in a cursive style.

Message from the President and Chief Executive Officer

Building the future, together

Greater Montreal has undergone profound transformation in recent years. Across the territory we serve, communities are facing growing pressure from the rising cost of living, lack of affordable housing, increasing food insecurity and more social isolation. In the face of these challenges, one thing remains clear: we must continue to reinforce our social fabric and strengthen our collective action.

For half a century, Centraide of Greater Montreal has embodied this belief. We have united citizens, agencies, volunteers, partners and donors around a common goal: building a more inclusive Greater Montreal.

In my first months at Centraide, I've witnessed the transformative impact of this collective effort. Every donation, every engagement and every partnership with the community sector is a concrete step toward strengthening our neighbourhoods and changing lives.

However, we must do more to meet the growing challenges. Complex social issues demand coordinated responses anchored in local realities and guided by a shared long-term vision. Centraide is uniquely positioned as a trusted partner, an incubator of solutions and a unifying force.

In the years to come, we will continue to support a network of strong, deeply rooted community agencies while investing in long-term solutions. We will prioritize basic needs through projects in the areas of food security, homelessness and housing. For example, a major project with Carrefour solidaire will expand the Cartes Proximité food voucher program to improve access to fresh, healthy and local food. We will also continue to inspire generosity by encouraging everyone to contribute to change, while strengthening collaboration across the ecosystem to scale-up effective practices and spark innovation.

These goals rest on a simple and firmly held belief: we can create lasting change together.

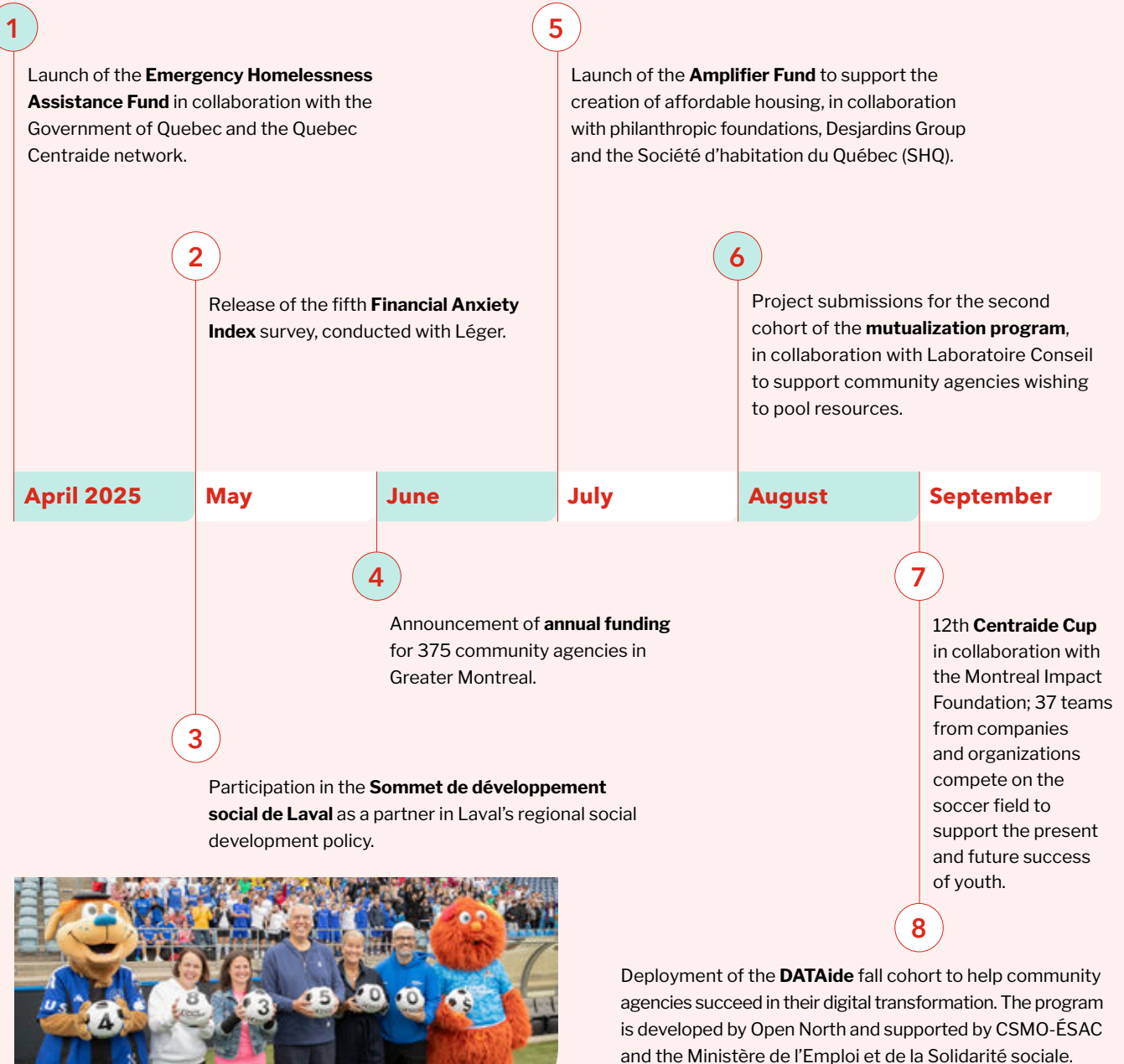
Thank you to everyone who makes our work possible: the community agencies, volunteers, partners, donors, leaders and the dedicated Centraide team. Together, we transform our mission into reality every day and contribute to building a better future for everyone.



Tasha Lackman
President and Chief Executive Officer

Tasha Lackman

Year at a Glance: Key Initiatives, Partnerships and Collaborations



The Centraide Cup has been held at Stade Saputo for the past 12 years.



Solidaires Awards, February 2026.

9

Kickoff of Centraide's annual campaign, the centrepiece of our fundraising efforts that unites volunteers, agencies, partners and donors in solidarity.

10

Staging of the **Jeux de l'entraide**, an initiative of Centraide's Emerging Philanthropists Committee, presented by National Bank of Canada, where teams from a variety of organizations compete in challenges inspired by real-life situations experienced by the community sector.

October

November

December

15

Collaboration with the **Canadian Philanthropy Partnership Research Network (PhiLab)** as part of the Collective Impact Project.

January 2026

February

March

14

14th cohort of **Leadership rassembleur**, a training program run in collaboration with the consulting firm Dynamo.

17

Strengthening of ties between the business community and community social development initiatives through meetings and collaborations with **chambers of commerce**.

12

First edition of the Techaide Scope AI Thon, where university students in artificial intelligence and data science create an AI roadmap to address community-sector issues.



Second edition of the Jeux de l'entraide presented by National Bank.

11

Presentation of the **second edition of the Collective Impact Project's Carrefour des apprentissages**, bringing together community, institutional and philanthropic partners.

16

Gathering of the partners of the Initiative montréalaise de soutien au développement social local (IMSDSL) at the **Grand rendez-vous** to celebrate the project's 20th anniversary.

Amounts raised

\$87,065,097

\$67,854,913

**Donations and subscriptions
(net uncollectible subscriptions)**

\$925,000

Endowment donations

\$18,285,184

Special projects, interest and other revenue

Philanthropic partners

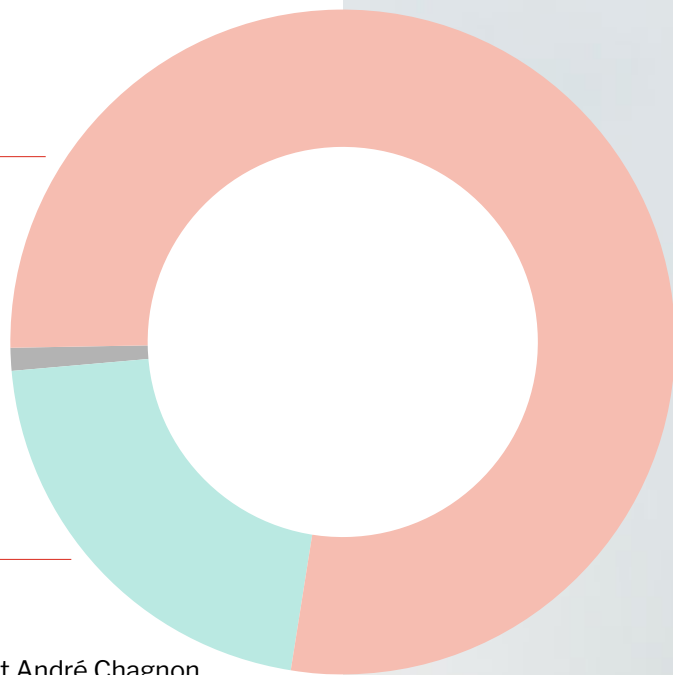
- Collective Impact Project (CIP)
- Youth Success Project – Fondation Lucie et André Chagnon
- Housing and Rights – Trottier Family Foundation

Corporate partners

- Data Valorization Initiative – BMO Financial Group
- Health and Financial Wellness – Sun Life Canada
- Affordable Housing in Greater Montreal – JPMorganChase Foundation

Governments

- Provincial – Emergency Homelessness Assistance Fund
- Municipal – Laval Fund



Amounts invested

\$75,907,750

87%

of the funds
raised go back to
the community.



The community agency Baobab Familial supports students in Côte-des-Neiges after school by offering homework help.

Understanding Challenges and Needs

A key step in supporting communities

Greater Montreal's social fabric is under unprecedented strain. The jump in the cost of living, the ongoing housing crisis, food insecurity and the rise in homelessness are causing hardship for more and more individuals and families.

On the front lines, community agencies are coping with growing demand and more complex situations that require broader forms of support, but with fewer resources.



The community gardens of Nutri-Centre LaSalle, an organization dedicated to food security.

In-depth analysis of social realities

Our analysis of social issues draws on multiple sources: available data, the expertise of community agencies, and ongoing dialogue with local partners who observe the development of conditions on the ground day by day.

These combined perspectives give us a more accurate shared understanding of social realities.



Photo taken by Concertation Saint-Léonard during a community mobilization event in the neighbourhood.

Neighbourhood Profiles: social data just a click away

For decades, Centraide has produced territorial profiles to better understand local conditions. In 2025-2026, this initiative reached a new milestone with the launch of **Neighbourhood Profiles**, a digital tool that facilitates access to social data.

Available on the Centraide website, Neighbourhood Profiles let agencies and social development partners explore regional realities at different scales, down to the neighbourhood level. Each profile includes key facts and an interactive dashboard with data on demographics, socioeconomic determinants, sociocultural characteristics and living conditions.

The purpose of Neighbourhood Profiles is to equip community stakeholders, support collective reflection and guide local planning. They also help Centraide refine its analyses and make decisions based on detailed local information.

Neighbourhood Profiles

Providing Stable Funding to Community Agencies

A key thread in a strong social fabric

The ability of community agencies to act depends largely on stable funding. In 2025-2026, Centraide continued its commitment to providing multi-year financial support that affords agencies greater continuity and predictability.

This choice reflects our belief that a strong social fabric can be woven only through stable agencies with solid tools and deep roots in their communities.



Operating funding: Centraide's core approach

Centraide prioritizes general operating funding (also known as mission-based funding) over project-based funding.

This type of support funds all of an agency's activities, rather than individual projects. It covers direct services to individuals and families as well as daily operations (human resources, organizational affairs, governance, coordination in the community). For the agencies, this contributes to team stability, service continuity and the ability to respond to needs on the ground.

Centraide may also provide support for specific projects to address priority issues or test new approaches.

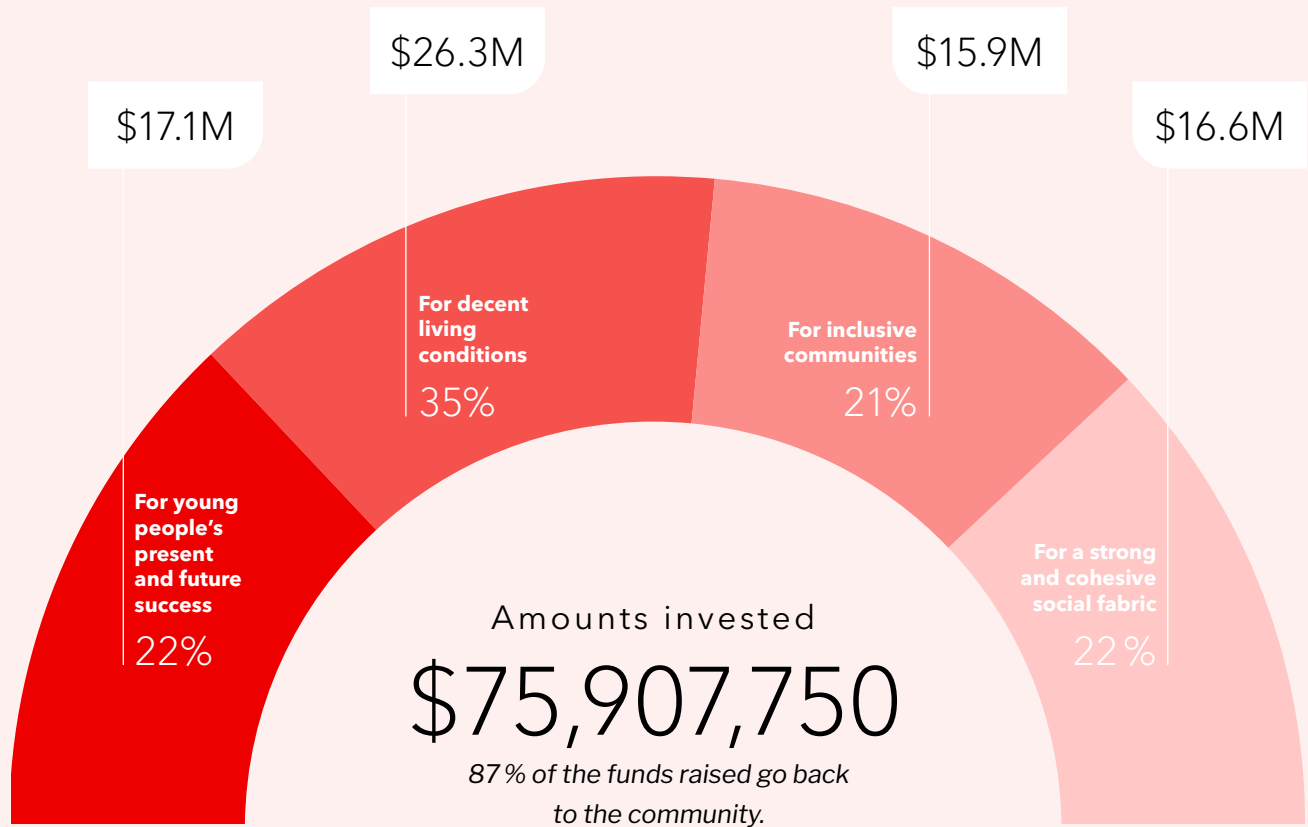
Support for agencies and projects



Community workers of Ricochet,
an agency supported by Centraide
of Greater Montreal.

Our investments in each area of action

In 2025-2026, \$75,907,750 was invested in Greater Montreal communities through 375 community agencies and projects. This investment was divided across four areas of action:



FOR YOUNG PEOPLE'S PRESENT AND FUTURE SUCCESS

Early childhood development — Academic and social success — Support for parents and families



Baobab Familial

Total investment: 22%

Amount invested

2023-2024	2024-2025	2025-2026
\$20.4M	\$18M	\$17.1M

Number of supported agencies and projects

129	134	134
-----	-----	-----

FOR DECENT LIVING CONDITIONS



Housing — Food security — Homelessness — Budgeting and financial literacy

Total investment: 35%

Amount invested

2023-2024	2024-2025	2025-2026
\$19.2M	\$19.2M	\$26.3M

Number of supported agencies and projects

136	128	146
-----	-----	-----

FOR INCLUSIVE COMMUNITIES



Advocacy and inclusion of marginalized groups — Mental health support

Total investment: 21%

Amount invested

2023-2024	2024-2025	2025-2026
\$16.7M	\$16.2M	\$15.9M

Number of supported agencies and projects

144	131	144
-----	-----	-----

FOR A STRONG AND COHESIVE SOCIAL FABRIC



Community engagement and volunteering — Neighbourhood life — Capacity building and access to resources for community stakeholders

Total investment: 22%

Amount invested

2023-2024	2024-2025	2025-2026
\$16.9M	\$16.8M	\$16.6M

Number of supported agencies and projects

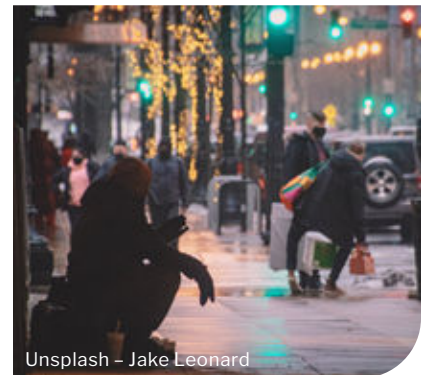
122	142	130
-----	-----	-----

Investments by area of action

Focus on basic needs: housing, food security and homelessness

The face of poverty is changing in Greater Montreal and many people are finding it increasingly difficult to meet their basic needs. Finding affordable housing, putting enough healthy food on the table and avoiding homelessness are growing challenges for many.

Centraide therefore focuses on agencies that provide concrete assistance to people facing these hardships. It prioritizes initiatives that improve living conditions and reduce inequality in the long term, while also supporting emergency assistance as needed, primarily through special funds.



Examples of our strategies in action

Supported agencies work to defend tenants' rights, prevent homelessness and improve access to affordable housing.

Housing

In Greater Montreal, **housing committees** empower tenants by providing information and supporting people facing eviction, excessive rent hikes or substandard conditions.

In Montréal-Nord, the **Centre d'activités pour le maintien de l'équilibre émotionnel (CAMÉÉ)** supports stable housing for people living with mental health issues through community-based assistance.

In Côte-des-Neiges, the **Safe Housing Brigade** offers ongoing support to help vulnerable tenants improve their living conditions.

Centraide also supports initiatives to improve access to affordable housing, such as those led by Vivre en Ville. These efforts to protect tenants' rights include work on the **Rental Registry** and tracking rental market trends to inform public housing policy.

The agencies working in this area meet food needs while promoting self-sufficiency and engaging with individuals and communities.

The supported agencies assist people at various stages along the homelessness trajectory, from living on the streets to achieving and maintaining housing stability.

One in four renter households in Greater Montreal spends over

30%

of its income on housing

Food security

In Côte-des-Neiges, **MultiCaf** combines food assistance with psychosocial support to assist people in complex situations and help them reduce their long-term reliance on emergency aid.

In a disadvantaged area of LaSalle, **Nutri-Centre LaSalle** runs community kitchens, gardens and markets to help residents become more food self-reliant.

Other agencies, such as **La Croisée de Longueuil**, are active on multiple fronts, including emergency food assistance, cooking workshops, community kitchens and gardens, and a winter greenhouse.

As situations grow more complex, agencies adapt. For example, **Resto Plateau** has expanded its services in response to rising poverty and homelessness on the Plateau-Mont-Royal.

At the provincial level, the **Quebec Collective Kitchens Association** is leading a campaign to protect the right to food through a framework legislation.

L'Espace Cuisine, an initiative of the **Conseil SAM**, promotes collaboration and the sharing of best practices among food security agencies.

Homelessness

In the Sud-Ouest Borough, **Le TRAC (Travail de Rue Action Communautaire)** reaches out to vulnerable people to build trust and help them access resources.

In Hochelaga, **Maison Oxygène** provides housing and support to fathers in highly vulnerable situations to prevent social breakdown and housing instability.

In Laval, the **Réseau des organismes en itinérance de Laval (ROIL)** has set up a shelter and a street café to address urgent local needs.

In downtown Montreal, **Projets autochtones du Québec (PAQ)** supports Indigenous people experiencing homelessness or major vulnerability through culturally appropriate services that help them achieve greater stability.

Centraide also supports collective action to address homelessness through the **Mouvement pour mettre fin à l'itinérance à Montréal (MMFIM)** and the **Réseau d'aide aux personnes seules et itinérantes de Montréal (RAPSIM)**.

The people whose lives are better

TIANA



**BUILDING
CONFIDENCE,
ONE HOMEWORK
ASSIGNMENT
AT A TIME**



PATRICK



**HOMELESSNESS
CAN HAPPEN
TO ANYONE**



MARIE SIA



**A GUIDING LIGHT
FOR A FUTURE
MOM**



ANDRÉE



**A NEW LIFE
AT THE SCAMA
CENTRE**



FRANÇOIS



**BACK
ON TRACK**



“The support I received taught me how to get organized and believe in myself. I can use what I've learned for the rest of my life.”

– *Tiana*

In high school, **Tiana** experienced intense stress and anxiety about her academic performance. She was motivated but felt overwhelmed by the piles of homework. With structured academic support from **Diapason-Jeunesse**, she learned to organize her work, manage her time and believe in herself. Today, she feels confident in her studies and mentors other young people.

“I really felt welcome. They made me feel I had nothing to be ashamed of. They listened without judging.”

– *Marie Sia*

Soon after arriving in Quebec, **Marie Sia** found herself unexpectedly pregnant, isolated, without family support and unable to work for health reasons. Through **Women on the Rise**, she received material and psychosocial support, gaining stability and confidence in her future as a mother.

“They provided me with an apartment. I had a week and a half of therapy left. I was really happy to have a place to stay.”

– *François*

After a divorce and a period of substance abuse, **François** lost his home and wound up on the street. Through **PAS de la rue**, he began therapy, found temporary housing and relearned how to manage daily life. Now clean, he has reconnected with his children, become a grandfather and is rebuilding his life, step by step.

“They welcomed me and my dog, Ruben. They gave me clothes, a shower, a warm bed and three meals a day. They accept you as you are.”

– *Patrick*

At the age of 46, **Patrick** lost everything. After waking from a coma to learn his wife had died, he found himself on the street. In the grip of loneliness and suicidal thoughts, he found comfort in his dog, Ruben. The **Ricochet** agency helped him rebuild his life by offering him a place to stay, meals and psychosocial support. Today, he intends to give back to the community by volunteering.

“Here, seniors are surrounded by wonderful supportive people. You make friends, and there are lots of interesting activities.”

– *Andrée*

At 75, **Andrée** was spending her days isolated and sedentary at home with her husband, with few opportunities to go out or socialize. At the **SCAMA Centre**, she found a place where she could connect with others, stay active and rebuild her social network through activities and support programs. Today, SCAMA has become a second home—bustling with energy and new people to meet.

Building Skills and Leadership

A unique form of support

Beyond funding, Centraide plays an important role in supporting the development of community agencies and helping them build their skills and leadership.

In a time of complex social issues, this support makes agencies stronger, more agile and better equipped to meet current and future challenges. It also enhances their ability to act together in a coordinated way.

Building skills and leadership



Courtesy of Dynamo, a consulting firm specializing in collaboration that supports community organizations in maximizing their impact.

Staying the course with mutualization

Centraide has made resource mutualization a key component of its support for skills development. This approach is based on a shared understanding that agencies face common challenges that are best addressed collectively.

After an initial call for projects in fall 2024, Centraide followed up with a second cohort in summer 2025. Together, these two groups reflect a growing desire among agencies to pool expertise and resources to strengthen their capacity to act.

Over 40 partner organizations were involved in the first cohort of 10 projects, led by as many agencies. In 2025-2026, a second cohort added 7 more projects involving 19 agencies currently working to implement their mutualization initiatives.

The mutualization program provides a structured framework for agencies to think differently, test solutions and learn from each other.

Each project receives support including specialized workshops, personalized coaching and access to shared tools. Laboratoire Conseil, a nonprofit with recognized expertise in mutualization, guides participants through the process.

Overall, more than \$1.2 million in financial support has been granted to projects from both cohorts.



Mutualization

Centraide's two mutualization cohorts in a nutshell:

17
projects

59
partner
organizations

More than
\$1.2 million
in financial
support

Innovating and Acting Collectively to Tackle Complex Challenges

A path to greater impact

Social innovation and collective action are powerful tools for addressing complex challenges such as poverty and social exclusion. By creating spaces for experimentation; stimulating partnerships across the community, institutional and philanthropic sectors; mobilizing financial and non-financial resources; and promoting the exchange of expertise, Centraide helps increase the impact of initiatives in the field while generating changes in practices. Depending on the context, it acts as a catalyst, partner or convenor of projects and initiatives.

Collective Impact Project: a unique and important initiative

This year, the Collective Impact Project (CIP) celebrated its 10th anniversary. Launched by the **Lucie and André Chagnon Foundation** and Centraide of Greater Montreal, the CIP has brought together the community, institutional and philanthropic sectors in many Montreal neighbourhoods around the shared goal of making concrete improvements to living conditions.

From the outset, the CIP has given neighbourhoods the space and support to try new practices. Thanks to flexible multi-year funding, support and learning opportunities, communities have been able to envision, test and refine solutions tailored to their specific circumstances.

Over the years, the CIP has become a true incubator for experimentation, leading to initiatives in food, housing, social inclusion, academic success, community infrastructure and citizen participation.

Initially implemented in 17 neighbourhoods, the CIP is now active in 31 Montreal neighbourhoods, a testament to the value of this approach and its capacity to generate sustainable solutions led by and for the community.

A total of \$45.7 million in financial support has been granted to 63 collective initiatives over the past ten years.



Collective Impact Project, Ahuntsic

Philanthropic partners



Institutional partners



Community partner



Collective Impact Project



Overhead view of a Greater Montreal neighbourhood. Credit: monarc.

Transforming a fixed asset into a response to the housing crisis

In 2025-2026, Centraide sold its downtown Montreal parking lot to turn a real estate asset into a concrete response to the housing crisis. The proceeds went to the **Amplifier Fund** and the **Initiative immobilière communautaire du Grand Montréal**, two initiatives to support affordable housing and community infrastructure. **UTILE**, a social economy organization dedicated to student housing, will oversee the development of an affordable student housing project on the lot. This is a concrete example of how an asset can be transformed to meet current needs.

A voice for the community in developing affordable housing

As part of the **Groupe d'accélération pour l'optimisation du projet de l'Hippodrome (GALOPH)**, Centraide played an active role in ensuring community input into the site's development.

First, Centraide supported the hiring of a staff member, supervised by the **Corporation de développement communautaire de Côte-des-Neiges**, to ensure that the social realities and needs of the community were fully considered.

This work led to a shared vision of an inclusive, primarily residential and community-oriented neighbourhood including 10,000 non-market housing units, nearly half of which will be social and affordable housing, as well as infrastructures for neighbourhood life.



Men experiencing homelessness have a coffee in the common area of PAS de la rue.

Mobilizing Community Members

Where it all begins

T rue change begins with people who choose to get involved. By contributing their time, money and expertise, citizens make Centraide's mission possible and turn individual acts of generosity into a collective force. Every donation and every hour of volunteer work supports community agencies—and through them, individuals and families in need. None of this would be possible without citizen engagement.

Annual campaign galvanizes the community for a good cause

Centraide's annual campaign is a key opportunity for thousands of people to express their solidarity with the shared goal of strengthening the social fabric and supporting vulnerable people. Donors and volunteers come together in a living chain of generosity that extends well beyond the campaign period.



Peerless Clothing hosts a benefit for Centraide.

Every gift adds up

Individuals, companies and workplace groups all make donations that are essential to the accomplishment of Centraide's mission. When needs surged in 2025, the community stepped up. The annual campaign raised a total of \$72.4 million under the leadership of co-chairs **Annick Guérard**, President and CEO of Transat, and **Charles Emond**, President and CEO of La Caisse.



2025 campaign co-chairs Annick Guérard, President and CEO of Transat, and Charles Emond, President and CEO of La Caisse, flanked by Maud Doualan, Vice President – Philanthropic Development, Centraide of Greater Montreal on the left, and Julie Gagné, Interim President and Chief Executive Officer, Centraide of Greater Montreal on the right.

Major Donors

Major Donors make personal gifts of \$10,000 or more. Their contributions—which account for nearly one third of the money raised by the annual campaign—played a crucial role in supporting Centraide's mission again this year. This network of over 900 individuals is composed of members of the Major Donors' Circle, chaired by **Paul Desmarais III**.

[2024 Recognition Directory](#)

Close to

600

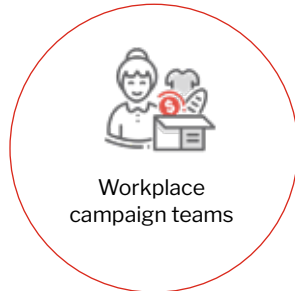
partner companies
and organizations

Centraide also honours its Guardians, a group of over 50 exceptional donors and family foundations who have each contributed a total of over \$1 million to Centraide since 1988. Their remarkable generosity and steadfast commitment over the years embody a lasting spirit of solidarity that profoundly impacts the community.

[The Guardians](#)

Volunteer committees and leaders

The 2025 campaign was supported by dedicated volunteers who played leadership roles in the campaign cabinets, philanthropic circles and campaign committees. Their involvement helped mobilize their communities, raise awareness of Centraide's mission, and expand the campaign's reach.



Geneviève Provost and Samantha Welscheid, two volunteers on Centraide's Campaign Cabinet, at the 2025 campaign launch.



A volunteer from the SCAMA Centre in Laval delivers healthy meals to seniors' homes at lunchtime.

Bringing the citizen perspective into sound investments

After the campaign ends, citizen involvement continues throughout the funding process. In collaboration with Centraide advisors, **evaluation volunteers** work with the agencies to better understand their circumstances and challenges. Their findings are then submitted to the **Social Development Investment Committee**, which uses this feedback to inform investment decisions and ensure they align with Centraide's priorities and realities on the ground.

Volunteer-led governance

All of this work is supported by the dedicated members of Centraide's **Board of Directors**. This volunteer body plays a central role in approving funding orientations and decisions, ensuring a rigorous, accountable process aligned with the collective interest.

Volunteering at agencies

Thousands of volunteers deliver services directly in the community every day, supporting individuals and families and maintaining a strong social fabric.

Acknowledgements and Recognition

Board of Directors

Grégoire Baillargeon, Chair; **Marie Hélène Noiseux**, Vice Chair and Treasurer; **Andrea Nicholls**, Secretary; **Jean-Marc Chouinard**, Chair, Social Development Investment Committee; **Julie Shugarman**, Vice Chair, Social Development Investment Committee; Nancy Audette, Luciano Barin Cruz, Philippe Béland, Anne-Marie Boucher, Denis Giangi, Jean-Benoît Grégoire Rousseau, Marie-Claude Guérard, Eric Lachance, Marie-Josée Lapierre, Patrick Lauzon, Maha Lebbos, Renée Loiselle, Caroline Maso, Thierry Nguyen, Jessica Olivier-Nault, Saad Saade.

Social Development Investment Committee

Jean-Marc Chouinard, Chair; **Julie Shugarman**, Vice Chair; Manuela Clément-Frencia; Simon Gamache; Jean-Benoît Grégoire Rousseau; Eric Kingsley; Randy Legault-Rankin; Jean-François Marcil.

Evaluation Volunteers

Cécile Amara, Denise Audet, Valérie Bergeron, Paule Biron, Théophile Bourgeois, Catherine-Emmanuel Brunet, Johanne Campbell, Tania Choueiri, Manuela Clément-Frencia, France Dussault, Barbara Eyer, Michèle Hogue, Eric Kingsley, Karine Lemieux, Jean-François Marcil, Caroline Marcoux, Yvette Mbogo, Anabelle Michaud, Oliviana Mingarelli, Youmna Mourad, Jean-Luc Raymond, Gabriel Salathé-Beaulieu, Alexandra Savidis, Annie Sébastien, Marie Tessier.

2025 Campaign Cabinet

Co-Chairs: Annick Guérard and Charles Emond. **Food and retail:** Annie St-Arneault, Richard Pruneau, Norman John Hébert, Donna Lutfy. **Professional firms:** Nochane Rousseau, Maxime Aucoin, Francis Richer de La Flèche, Michèle Lefavre, Dino Rambidis, David Ouellet, Julianna Fox. **Government of Canada:** François Bernier, Timothée Labelle. **Real estate and construction:** Roxane Tremblay, Alexandra Murdock, Scott Speirs, Sébastien Ducharme, Steven Di Ciocco, Yanick Bouchard, Yannick Tisseur, John Marcovecchio, Sébastien Tremblay, François Tremblay, Reed Bousada, Ginette Bazinet. **Industries and transportation:** Pascal Grenier, Ève Laurier, Satheeshkumar Kumarasingam, Mathieu Johnson, François Gentes, Olivier Marcil, Martin LeBlanc. **Techaide initiatives:** Alan MacIntosh, Nectarios Economakis. **Media and telecommunications:** Jean-Philippe Paradis, Jérôme Allaire, Marie-Ginette Lepage, Nicholas Payant, Anne Lavigueur, Christiane Asselin, Lucie Quenneville. **Agencies supported by Centraide:** Raymond Villeneuve. **Recruitment of philanthropic development associates:** Karine Eid, Hugues Lamarche. **Financial services:** Mario Rigante, Geneviève Provost, Emmanuel Jaclot, Sophie Lamonde, Julie Vézina. **Government agencies and public bodies:** Benoît Collette, Louis-Philippe LeBlanc, Karina Verdon, Federico Pasin, Annie Gerin. **Health care:** Brian Daley, Christine Lennon, Steve Martin, Jody Engel, Nadia Turchetta, Mark Nawacki, Mazen Zaytoun. **Unions:** Caroline Senneville, Magali Picard. **Technology:** Guillaume Bazinet, François Dion, Alan MacIntosh, Nectarios Economakis, Benoit Veronneau, Paul Raymond.

Major Donors Cabinet 2025

Paul Desmarais III, Chair; **Eric La Flèche**, Honorary Chair; Abe Adham; Kathy R. Assayag; Alain B. Auclair; Grégoire Baillargeon; Éric Bédard; Carl Bélanger; Émilie Bissonnette; Pierre Boivin; Anne-Marie Boucher, Jean-Marc Bougie, Philippe Bourassa, Sophie Brochu, Stephen R. Bronfman, Sunil Chaubey, Clare A. Chiu, Viviane Croux, Jean-Guy Desjardins, Mary Dailey Desmarais, Éric Desrosiers, Étienne Dubuc, Michael M. Fortier, Hélène V. Gagnon, Mitch Garber, Caitlin Gill, Jonathan Ross Goodman, Norman Hébert, Norman John Hébert, Stephen J. Kelly, Joel King, Eric J. Klinkhoff, Daniel Labrecque, David H. Laidley, Daniel Lalonde, Laurie Lanoue, Stéphanie Larivière, Andrew J. Lutfy, Isabelle Marcoux, Éric Martel, David Massé, Jacques Maurice, Irene Nattel, Thierry Nguyen, R. Jeffrey Orr, Luc Ouellet, Sophie Palmer, Francis Pomerleau, Geneviève Provost, Richard Renaud, Nick Rodrigo, Caitlin Rose, Claude Séguin, Jean-François Séguin, Bradley P. Semmelhaack, Norman M. Steinberg, Sharon Stern, Alain N. Tardif, François Tellier, Samantha Welscheid, Jonathan I. Wener, Alysia Yip-Hoi.

Planned Giving Advisory Committee

Marie-Josée Michaud, Chair; Sylvie Amar; Mélanie Beauvais; Marie-Ève Bercier; Anne-Marie Boucher; Johanne Claveau; Yves Durivage; Claude Séguin.

Emerging Philanthropists Committee

Camille Laberge and Julien Rizkallah-Leroux, Co-Chairs; Davide Allegra-Dumont, Max-Olivier Audet, Geneva Boulianne-Grenier, Meaggan Chauvin, Marco Chénard, Marika Dupont, Josée-Lise Leheutre, Marion Lespagnol, Sara Mansoor Ali, Jean-François Maurice, Sarah-Eve Morin, Chike Odenigbo, Claudia Schneidman.

Recipients of Solidaires Awards for Centraide campaign partners

Corporate Commitment (1,000+ employees): CAE, La Caisse, Transat; WSP; *Corporate Commitment (999 or fewer employees):* Carbonleo, Héroux Devtek, Les Entreprises QMD, Levio; *Mobilization (1,000+ employees):* Alstom, Bombardier, Hydro-Québec; *Mobilization (999 or fewer employees):* Fasken, McKinsey & Company, Moment Factory; *Collaboration:* Pratt & Whitney Canada Unifor Local 510, Solidaires sur les chantiers; *Startup:* Laurentian Pilotage Authority, Ateko – supported by Bell Canada, Peerless Clothing.

Recipients of Solidaires Awards for community agencies

Social Relevance: Plein Milieu for the “Plein Milieu se loge” project; *Social Transformation:* Centre communautaire Radisson for “La Trajectoire Radisson”; *Evaluation:* La Maison La Virevolte for “Action Research on Family Needs”; *Collaboration:* Concertation Saint-Léonard for the “Renforcement du milieu communautaire de Saint-Léonard” project; *Management and Governance:* The Depot Community Food Centre for its participatory strategic planning process; *Citizen Engagement:* Jacqueline Cardin, Service d’Aide Communautaire (SAC) Anjou.



Michèle Thibodeau-DeGuire Award

Caroline Bougie

Since 2013, Centraide has presented the Michèle Thibodeau-DeGuire Award to an exceptionally dedicated volunteer.

Caroline Bougie has played a key role in Centraide for more than 20 years, participating in strategic discussions and actively contributing to multiple committees. She chaired the Social Development Investment Committee from 2018 to 2022, was a member of the Executive Committee, served on the Human Resources and Governance committees, and sat on the Board of Directors from 2017 to 2024. From 2022 to 2024, she was the Chair of the Board.

Thank
you!



Photo taken at *L'Envol*, a community agency that supports vulnerable young mothers and their children.



Centraide of Greater Montreal
493 Sherbrooke Street West, Montreal, Quebec H3A 1B6

